

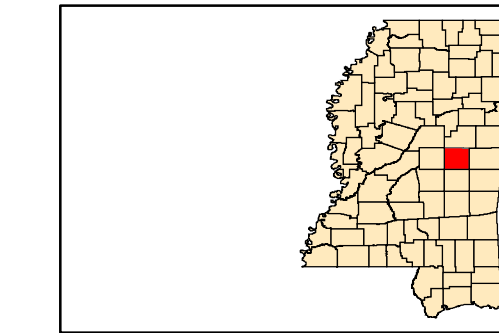
# NESHOBA COUNTY

## PUBLIC ROADS ON THE COUNTY ROAD SYSTEM

NESHOBA COUNTY BOARD OF SUPERVISORS

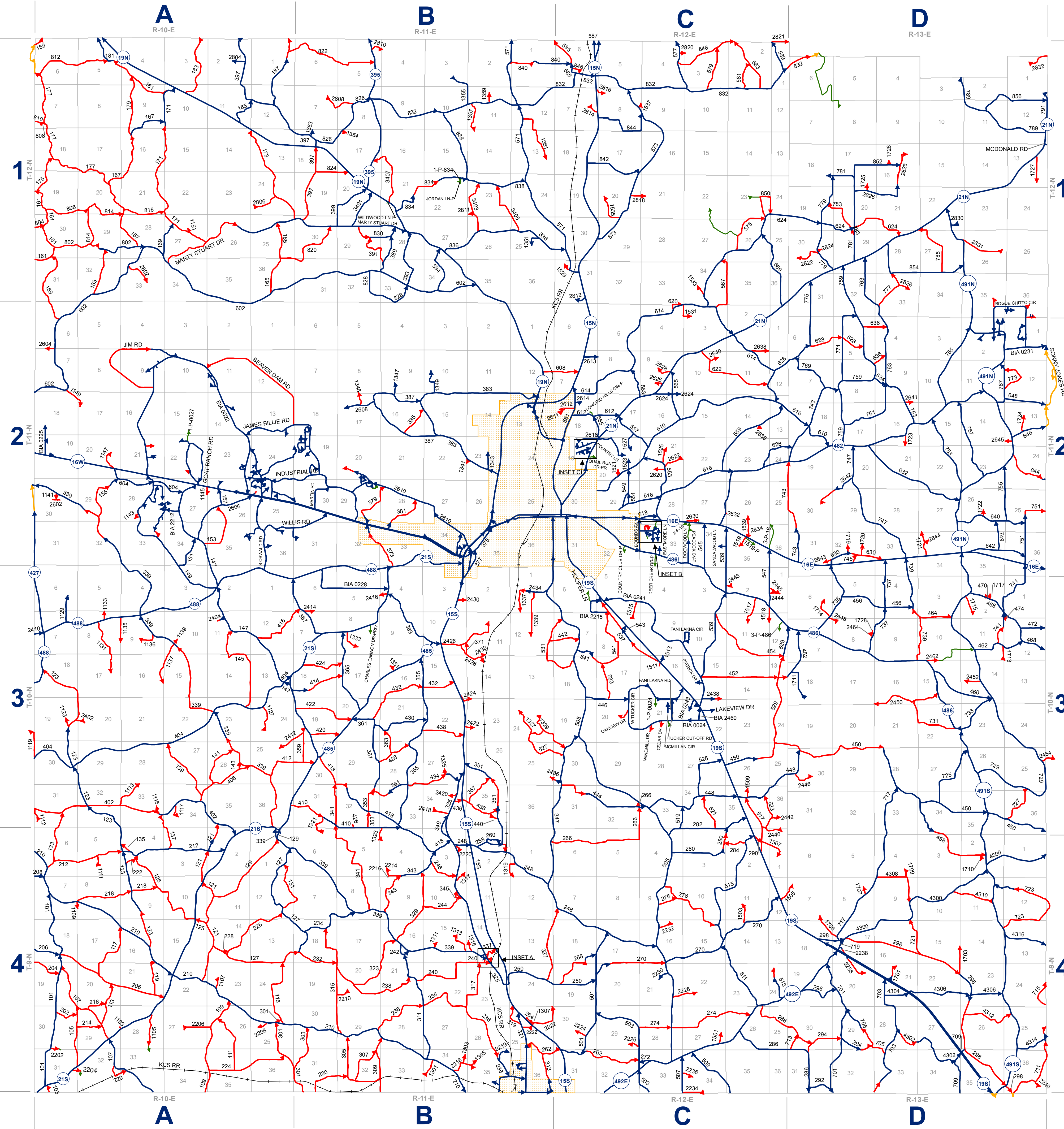
DISTRICT 1 - KEITH LILLIS  
 DISTRICT 2 - KEVIN CUMBERLAND  
 DISTRICT 3 - JERRY GOFORTH  
 DISTRICT 4 - ALLEN WHITE  
 DISTRICT 5 - OBBIE RILEY

BOARD ATTORNEY - WADE WHITE



EDDIE POSEY, COUNTY ROAD MANAGER  
 MARTY CROWDER, COUNTY ENGINEER

NESHOBA COUNTY ROAD DEPARTMENT  
 11901 HIGHWAY 15 NORTH  
 PHILADELPHIA, MISSISSIPPI 39350  
 601-656-8475 FAX 601-656-3343  
 www.neshobacounty.net



Road#	Index	Road#	Index	Road#	Index	Road#	Index	Road#	Index	Road#	Index	Road#	Index	Road Name	Index
101	4-A-31	288	4-C-26	472	3-D-12	737	3-D-8	1319	4-B-1	2410	3-A-7	1519-I			2-C-35
103	4-A-31	290	4-C-2	474	3-D-12	739	3-D-10	1321	3-B-31	2412	3-B-19	1-P-834			1-B-22
105	4-A-31/32	292	4-D-31	501	4-C-31	741	3-D-11	1323	4-B-4	2414	3-B-7	2-P-16			2-C-34
107	4-A-33	294	4-D-29	503	4-C-33	743	2-D-31	1325	3-B-27	2416	3-B-4	3-P-16			2-C-36
109	4-A-34	296	4-D-19	505	4-C-33	745	2-D-32	1327	3-B-24	2418	3-B-34	3-P-486			3-C-12
111	4-A-35	298	4-D-18	507	4-C-33/34	747	2-D-33	1329	3-B-24	2420	3-B-34	4-A-866			2-C-33
113	4-A-29	301	4-A-25	509	4-C-35	749	2-D-35	1331	3-B-16	2422	3-B-23	5-A-1023			3-C-22
115	4-A-25	303	4-B-31	511	4-C-23	751	2-D-36	1333	3-B-8	2424	3-B-15	BIA 0023			2-C-33
117	4-A-20	305	4-B-32	513	4-C-24	753	2-D-22	1337	3-B-4	2426	3-B-10	BIA 0028			2-A-19
119	4-A-21	307	4-B-32	515	4-C-15	755	2-D-25/26	1339	3-B-1	2428	3-B-10	BIA 0231			3-B-6
121	4-A-2	309	4-B-32	517	4-C-2	757	2-D-23	1341	2-B-23	2430	3-B-3	BIA 0231			2-D-1
123	4-A-4	311	4-B-34	519	3-C-34	759	2-D-17	1343	2-B-23	2432	3-B-14	BIA 0241			3-C-22
125	4-A-10	313	4-B-36	521	3-C-34	761	2-D-17	1345	2-B-17	2434	3-B-1	BIA 0243			3-C-22
127	4-A-12	315	4-B-29	523	3-C-35	763	2-D-16	1347	2-B-9	2436	3-C-30	BIA 2215			3-C-5
129	4-A-1	317	4-B-23	525	3-C-34	765	2-D-10	1349	2-B-10	2438	3-C-22	BIA 2353			2-D-1
131	4-A-12	319	4-B-25	527	3-C-30	767	2-D-11/12	1351	1-B-25	2440	4-C-2	BIA 2460			3-C-22
133	4-A-6	321	4-B-25	529	3-C-24	769	2-D-7	1353	1-B-18	2442	3-C-36	BOUNDS AV			2-C-33
135	4-A-4	323	4-B-20	531	3-C-18	771	2-D-8	1354	1-B-17	2443	2-C-2	BRANCH DR			2-C-19
137	4-A-3	325	4-B-23	533	3-C-17	773	2-D-12	1355	1-B-10/11	2444	3-C-1	CHARLES CANNON DR-P			3-B-8
139	3-A-34	327	4-B-24	535	3-C-16	775	2-D-6	1357	1-B-11	2445	3-C-1	CONDO DR			2-C-19
141	3-A-26	329	4-B-16	539	3-C-15	777	1-D-33	1359	1-B-11	2446	3-D-30	CONDO RD			2-C-19
143	3-A-26	331	4-B-14	541	3-C-7	779	1-D-30	1359	3-B-1	2448	3-D-8	COUNTRY CLUB DR-P			2-C-32
145	3-A-23	333	4-B-14	543	3-C-8	781	1-D-29	1361	1-B-12	2450	3-D-16	COUNTRY LN			2-C-20
147	3-A-13	335	4-B-14	545	2-C-34	783	1-D-29	1361	4-C-27	2452	3-D-14	CYPRESS CREEK DR			2-C-19
149	3-A-3	337	4-B-14	547	3-C-1/2	785	1-D-27	1363	4-C-14	2454	3-D-25	DANIELS CV			2-C-33
151	2-A-34	339	4-B-14	549	2-C-29	787	1-D-12	1365	4-C-36	2456	3-D-10/15	DEER CREEK DR-P			2-C-33
153	2-A-35	341	4-B-8	551	2-A-29	789	1-D-11/12	1367	1-D-11/12	2458	3-D-18	DODGWOOD LN			2-C-34
155	2-A-29	343	4-B-9	553	2-C-28	791	1-D-11/12	1369	4-C-2	2460	2-A-30	EASTMOE LN			2-C-33
157	2-A-26	345	4-B-10	555	2-A-26	793	1-D-11	1371	2-C-17	2462	1-A-6	GATEWAY DR			2-C-19
159	2-A-6	347	4-B-12	557	2-A-21	795	1-D-11	1373	3-C-16	2464	1-A-6	HOOVER LN-P			3-C-6
161	1-A-30	349	4-B-3	559	2-A-22	797	1-D-11	1375	3-C-5	2466	2-B-17	INDUSTRIAL CIR			4-B-35
163	1-A-32	351	4-B-2	561	2-C-18	799	1-D-11	1377	3-C-12	2468	2-B-17	JORDAN LN-P			1-B-22
165	1-A-36	353	3-B-32	563	2-C-6	801	1-A-7	1379	3-C-2	2470	2-B-27	KATE THOMAS DR			4-B-35
167	1-A-28	355	3-B-33	565	2-C-16	803	1-A-6	1381	3-C-2	2472	2-C-18	LONGINO HILLS CIR-P			2-C-18
169	1-A-27/28	357	3-B-35	567	1-C-34	805	1-A-29	1383	2-C-35	2474	2-C-18	LONGINO HILLS DR			2-C-18
171	1-A-27	359	3-B-30	569	1-C-36	807	1-A-21	1385	1-B-17	2476	2-C-19	MARTY STUART DR			1-A-34
173	1-A-24	361	3-B-33	571	1-B-12	809	1-A-21	1387	1-B-6	2478	2-C-19	MCDONALD RD			1-D-13
175	1-A-19	363	3-B-28	573	1-C-31	811	1-B-6	1389	2-C-21	2480	2-C-19	MCKEE ST			2-C-33
177	1-A-17/18	365	3-B-20	575	1-C-29	813	1-B-18	1391	2-C-17	2482	2-C-21	MCKEE ST-P			2-C-33
179	1-A-9	367	3-B-7	577	1-C-26	815	1-B-18	1393	1-C-31	2484	2-C-21	NORTH HILL DR			2-C-19
181	1-A-9	369	3-B-10	579	1-C-3	817	1-C-26	1395	1-C-3	2486	2-C-9/16	PEACOCK CV-P			2-C-34
183	1-A-10	371	3-B-10	581	1-C-2	819	1-C-3	1397	1-C-29	2488	2-C-9	PLANTATION PT DR N			2-C-19
185	1-A-11	373	2-B-29	583	1-C-2	821	1-B-8	1399	1-C-8	2490	2-C-9	PLANTATION PT DR S			2-C-19
187	1-A-12	375	2-B-29	585	1-C-2	823	1-B-8	1401	2-C-35	2492	2-C-9	PLEASANT RIDGE DR			2-C-19
189	1-A-6	377	2-B-28	587	1-C-6	825	1-B-6	1403	4-D-22	2494	2-C-19	QUAIL RUN DR-P			2-C-19
202	4-A-30	383	2-B-23	589	1-C-1	827	1-B-6	1405	4-D-17	2496	1-C-23	REFUGE RD-P			1-C-23
204	4-A-19	385	2-B-16	591	1-C-1	829	1-C-18	1407	4-D-17	2498	2-C-27	RILEY ST			2-C-33
206	4-A-18	387	2-B-15/16	602	2-A-7	831	1-C-8	1409	4-D-8	2499	2-C-21	SANDWOOD LN			3-C-34
208	4-A-6/7	389	1-B-28	604	2-A-20	833	1-C-8	1411	4-D-4	2501	2-C-19	SOUTHWIND DR			2-C-19
210	4-A-6	391	1-B-29	606	2-C-7	835	1-C-3	1413	4-D-2	2502	2-D-20	TABBY DR			2-C-33
212	4-A-6	393	1-B-33	608	2-C-7	837	1-C-3	1415	4-D-2	2504	2-D-20	WILLWOOD LN-P			1-B-21
214	4-A-29	395	1-B-34	610	2-C-29	839	1-C-23	1417	3-D-18	2506	2-D-31	WILL AV			2-C-33
216	4-A-29	397	1-B-34	612	2-C-18	841	1-B-21	1419	3-D-11	2508	2-D-34	WILLIAM AV			2-C-33
218	4-A-8	399	2-B-20	614	2-C-18	843	1-B-27	1421	3-D-6	2510	2-D-13				
220	4-A-32	401	3-A-31	616	2-C-29	845	1-D-11	1423	3-D-2	2512	1-B-53				
222	4-A-4	403	3-A-30	618	2-C-28	847	1-B-6	1425	4-D-22	2514	2-C-14				
224	4-A-35	405	4-A-28	620	2-C-4	849	1-C-18	1427	4-D-17	2516	2-C-14				
226	4-A-14	407	3-A-34	622	2-C-10	851	1-C-8	1429	4-D-8	2518	1-A-24				
228	4-A-14	409	3-A-34	624	1-C-34	853	1-C-8	1431	4-D-8	2520	1-B-8				
230	4-B-32	411	3-B-31	626	2-C-23	855	1-C-3	1433	4-D-2	2522	1-B-5				
232	4-B-18	413	3-B-18	628	2-C-12	857	1-C-3	1435	4-D-2	2524	1-B-23				
234	4-B-18	415	3-B-18	630	2-D-32	859	1-C-3	1437	2-D-16	2526	1-C-31				
236	4-B-18	417	3-B-18	632	2-D-32	861	1-C-3	1439	2-D-16	2528	1-C-7				
238	4-B-20	419	3-B-30	634	2-D-20	863	1-C-7	1441	2-D-13	2530	1-C-7				
240	4-B-21	421	3-B-19	636	2-D-19	865	1-C-7	1443	3-A-33	2532	1-C-20				
242	4-B-16	423	3-B-18	638	2-D-5	867	1-C-7	1445	3-A-34	2534	1-C-20				
244	4-B-10	425	3-B-28	640	2-D-26	869	1-C-7	1447	3-A-30	2536	1-C-4				
246	4-B-3	427	3-B-28	642	2-D-35	871	1-C-7	1449	3-A-19	2538	1-C-1				
248	4-B-3	429	3-B-20	644	2-D-24	873	1-C-7	1451	3-A-24	2540	1-D-30				
250	4-B-24	431	3-B-20	646	2-D-13	875	1-C-7	1453	3-A-7	2542	1-D-30				
252	4-B-24	433	3-B-20	648	2-D-12	877	1-C-7	1455	3-A-8	2544	1-D-30				
254	4-B-14	435	3-B-33	650	2-D-12	879	1-C-7	1457	3-A-8	2546	1-D-30				
256	4-B-14	437	3-B-22	652	2-D-12	881	1-C-7	1459	3-A-8	2548	1-D-30				
258	4-B-2	439	3-B-12	654	2-D-12	883	1-C-7	1461	3-A-8	2550	1-D-30				
260	4-B-2	441	3-B-12	656	2-D-12	885	1-C-7	1463	3-A-8	2552	1-D-30				
262	4-B-36	443	3-C-31	658	2-D-12	887	1-C-7	1465	3-A-8	2554	1-D-30				
264	4-B-25	445	3-C-18/19	660	2-D-12	889	1-C-7	1467	3-A-8	2556	1-D-30				
266	4-C-6	447	3-C-33	662	2-D-12	891	1-C-7	1469	3-A-8	2558	1-D-30				
268	4-C-19	449	3-C-26	664	2-D-12	893	1-C-7	1471	3-A-8	2560	1-D-30				
270	4-C-16	451	3-C-15	666	2-D-12	895	1-C-7	1473	3-A-8	2562	1-D-30				
272	4-C-33	453	3-C-10	668	2-D-12	897	1-C-7	1475	3-A-8	2564	1-D-30				
274	4-C-28	455	3-D-5	670	2-D-12	899	1-C-7	1477	3-A-8	2566	1-D-30				
276	4-C-9	457	3-D-34	672	2-D-12	901	1-C-7	1479	3-A-8	2568	1-D-30				
278	4-C-9	459	3-D-15	674	2-D-12	903	1-C-7	1481	3-A-8	2570	1-D-30				
280	4-C-4	46													