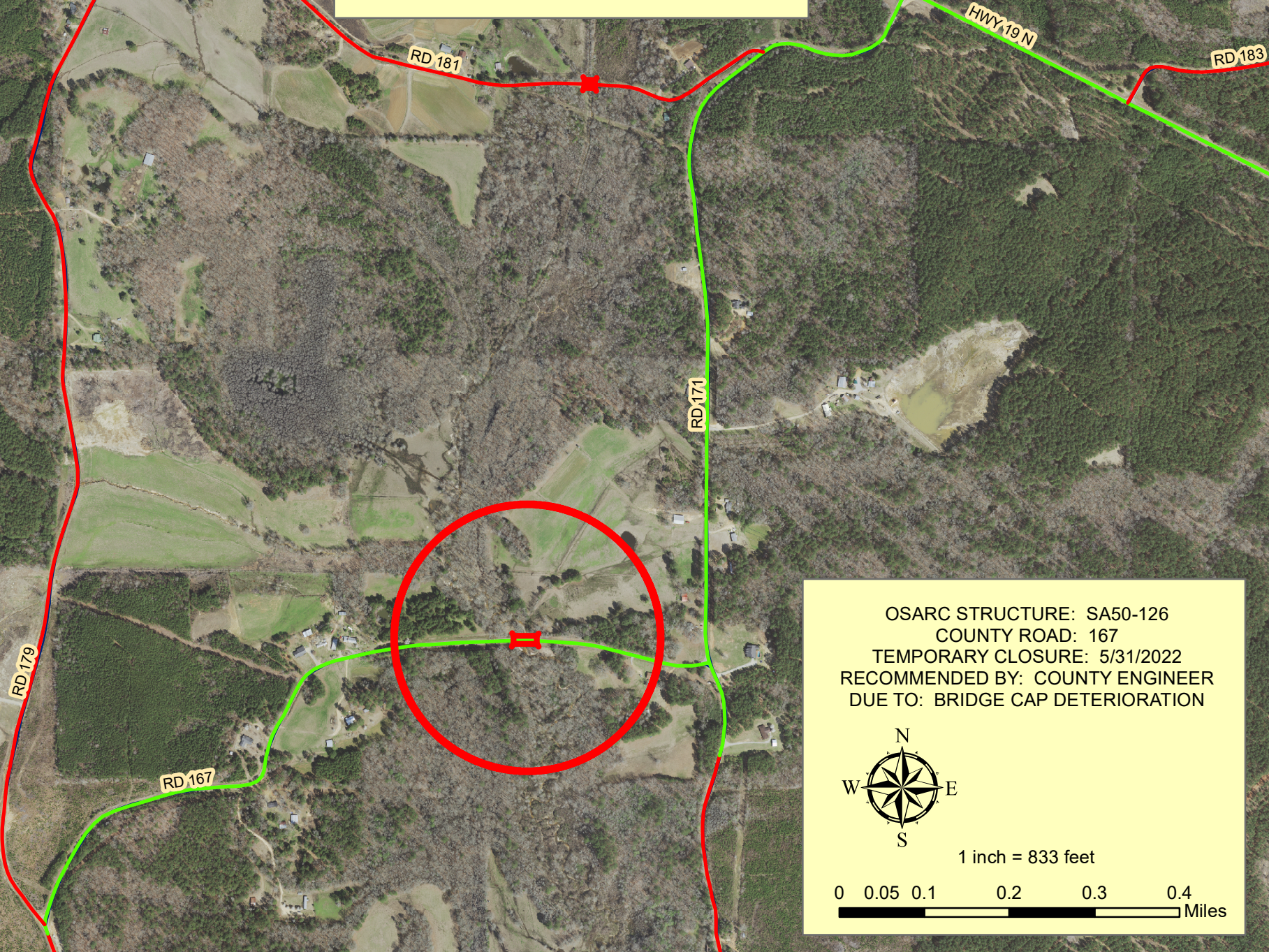
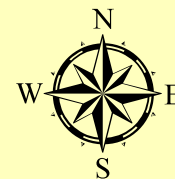


BRIDGE CLOSURE
COUNTY ROAD 167
BETWEEN ROADS 171 AND 179



OSARC STRUCTURE: SA50-126
COUNTY ROAD: 167
TEMPORARY CLOSURE: 5/31/2022
RECOMMENDED BY: COUNTY ENGINEER
DUE TO: BRIDGE CAP DETERIORATION



1 inch = 833 feet

0 0.05 0.1 0.2 0.3 0.4
Miles